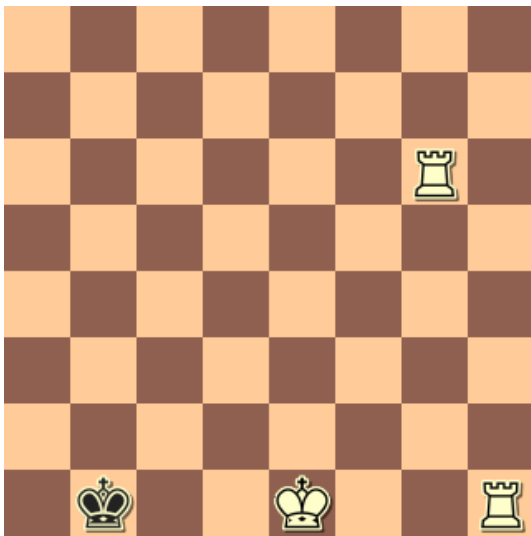
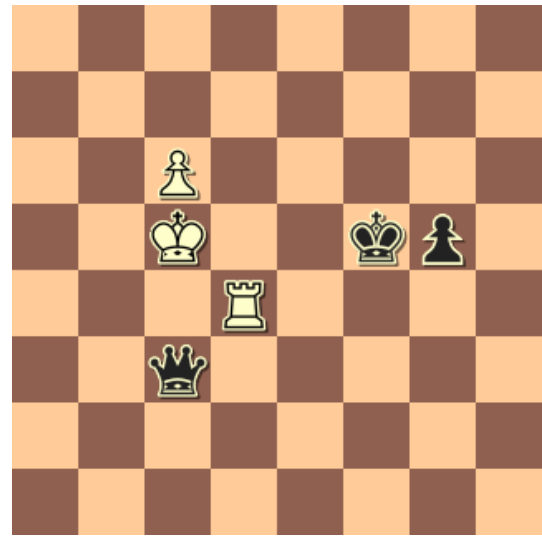


# Test your brain on these puzzles!



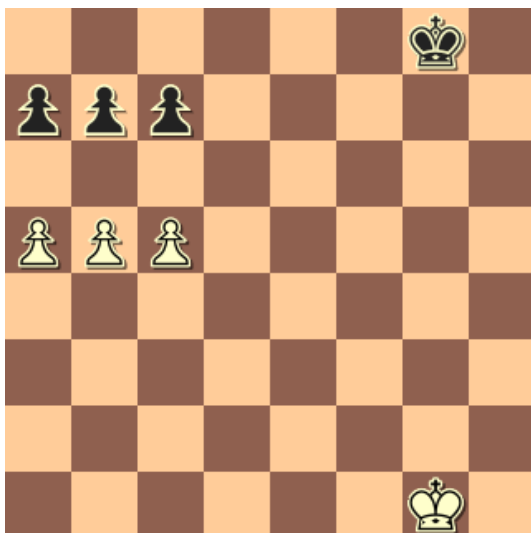
## Puzzle 1.

This is fun!! White to play and mate in 2 moves. Yes! You have to do it in ONLY 2 moves. Can you see how to do it?



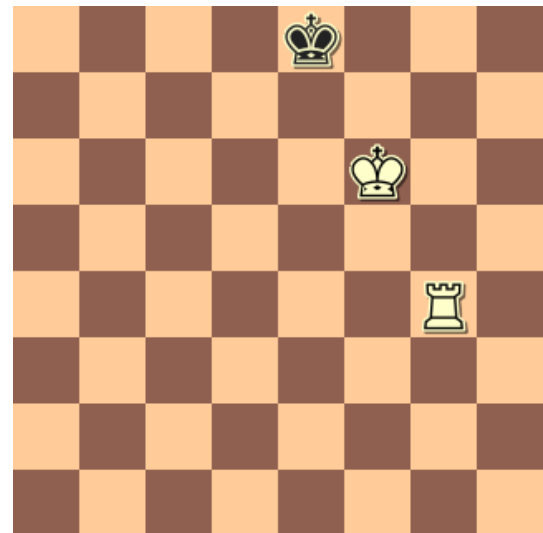
## Puzzle 2

This puzzle came from a real game by the late great Bobby Fischer (playing Black) against the almost-as-great Paul Keres. Play continued: 52. Kd5 g4. Then, Keres played 53. Rc4. Is this a good or a bad move? Look carefully!



## Puzzle 3

In the above position, the material is even. Black and white have both got the same number of pawns... but it is white to move. What should white play? Can he win? Or can Black stop him?



## Puzzle 4

A lot of beginners in chess find it difficult to get a quick checkmate when all they have is a rook. Can you see how white can get a quick checkmate here in only 2 moves. Look carefully now!