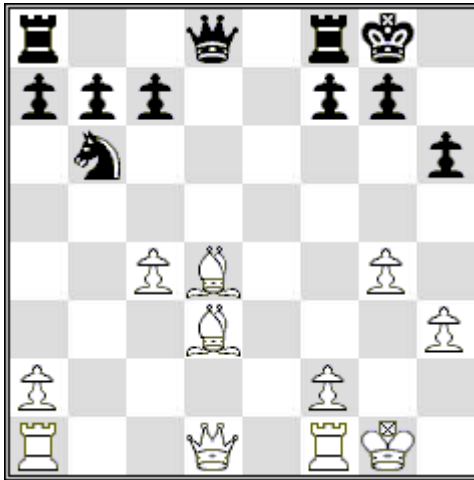
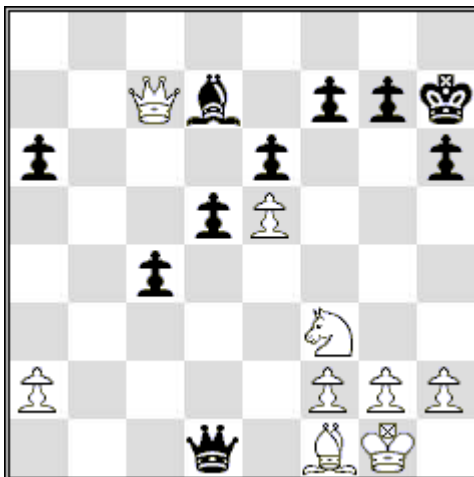


Lothar's Puzzles 1

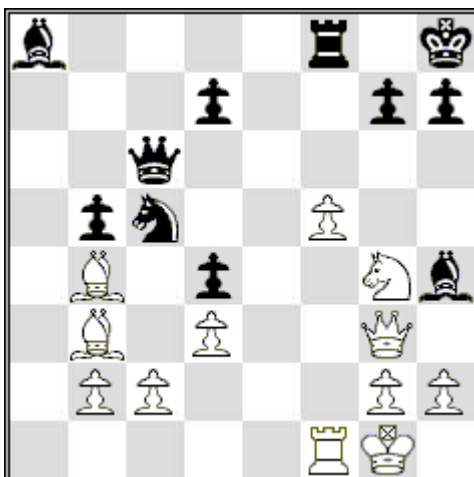
a. It is black's move and the bishop on d4 is up for grabs. Would you take it?



b. It is white's move and the bishop on d7 is up for grabs. Would you take it?



c. It is white's move and the bishop on h4 is up for grabs. Would you take it?



- a. 1...Qxd4, 2 Bh7+ Kxh7, 3 Qxd4
- b. 1 Qxd7 c3 and the pawn is unstoppable
- c. 1 Qxh4 Qxg2++