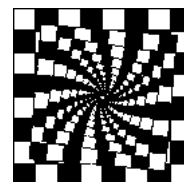


C.I.A. News

Chess Ideas Australia

February 2008



Welcome to the New Year

The first term of 2008, is such a short one, that even though the year is just beginning we are already thinking ahead to our first tournament. This is a Chess Victoria/Chess Ideas tournament and is being held at **Brighton Grammar School on Friday March 14th**

beginning at 9.30 am. We expect that many children will be participating especially since Brighton Grammar has shown itself to be a keen chess school with many high ranking players.

Come along and have some fun!

Chess Ideas
established in 1994

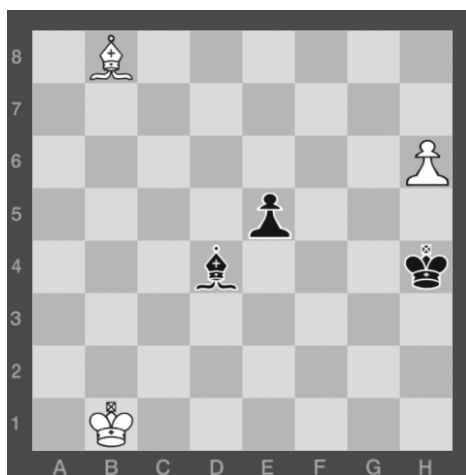
P.O. BOX 3158
Ripponlea, Vic, 3185
Phone: (03) 9532-8370
Fax: (03) 9532-8360
admin@chessideas.com.au

Puzzling Times

White to move. White would like to promote the 'h' pawn but if ;

1. h7; black can reply with 1. ... e4 and the bishop on d4 will control the promotion square on h8.

White comes up with a brilliant idea to deny the black bishop control of h8. Can you see it? (hint: 'decoy'.)



White to move.

Test your chess
knowledge :

1. *Bobby Fischer became a grandmaster in 1958. How old was he?*

2. *Who is the youngest female to become a grandmaster?*

3. *Who is the ex-world champion currently involved in Russian politics.*

4. *When was the first Australian Championship played?*

5. *Which member of the Australian Women's Chess Team came second in dancing with the stars in 2006?*

6. *The famous opening Ruy Lopez was named after the Spanish chess player. When was he playing?*



Alekhine was taught chess by his mother, was a master at 16 and full of driving nervous energy.

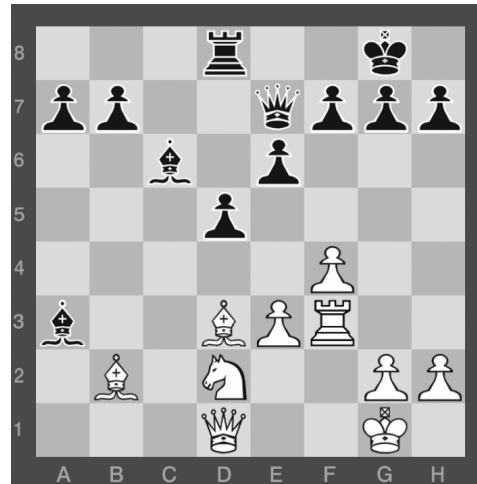
He was constantly analysing, and even in seemingly harmless situations, he would look at a sequence of moves (combination) often with surprising results.

Have a look at the game below and see some of his brilliance.

It was 1923 and he was still an up and coming player, competing in a small tournament in England. The position is even on points but Alekhine had an amazing winning combination!!

It was a classic double bishop sacrifice!! Don't try something like this unless you're really sure that the combination will work.

Alekhine went on to become world Champion from 1927—1935 and 1936—1946. In 1935 he lost the championship for one year, to Professor Max Euwe of the Netherlands. Euwe, a professor of mathematics was an extraordinarily strong amateur chess player, who generously allowed a return match almost immediately.



A. Alekhine —J.A.A. Drewitt
White to move and win in 5 moves:

- ◆ Alekhine won the rematch thus reclaiming the world championship!
- ◆ Solution.
- ◆ 1. Bh7+, Kxh7
- ◆ 2. Rh3+, Kg8,(2 , Kg6; 3. Qh5# mate)
- ◆ 3. Bxg7!, Kxg7: (the last chance was 3...f6 but white is winning)

Real-life checkmates

This game was played between Edward Adams and Carlos Torre. It was white to play, and what a move white made! Another queen decoy here, based on controlling the opponent's back rank.



1. Qb7!! The decoy is decisive
i.e. 1. Q x Q
2. Re8+ R x R
3. R x R (e8) #



Final Position after
3. R x R (e8) #



Darryl's Corner

(Darryl Johansen - International Grandmaster)

Akiba Rubinstein was one of the greatest chess players not to be world champion. Take a look at the game played between Rubinstein and Capablanca at San Sebastian in 1911

In the critical position below, white is to play his 15th move. This position is rich in possibilities.



- (ii) 15. Bf2
- 16. Kg2 Qh6
- 17. Nf4 would lead to a speedy loss



Possibility (1)

- 1. 14. Nd5!?
- If 14. ed5
- Then 15. Bc8 Rc8
- 16. Bf6 gf6
- 17. Qd5+

Where white has an excellent position and material is balanced.

Possibility (2)

- 14. Bf6 (the game continuation)
- 14. Q x B
- 15. Nd5!

An extraordinarily profound and beautiful combination.

- 15. Qh6
- If (i) 15. ed5,
- 16. Qd5 +

Followed by Bc8 etc as well as

From (ii) Position after 17. Nf4 winning for white (i.e. Black Bishop attacked and threat of Be6)

The culmination of Rubinstein's brilliant combination will appear in the next newsletter!



Darryl can be contacted for private tuition on 0403 414 833

Answers:**Puzzling times:****1. Solution:**

1. Ba7!! (ifBa7 then 2. h7 and the pawn is unstoppable)Bc3
2. Kc2 Ba1 (it's only safe square)
3. Bd4 ! Bd4 (if 3...exd4 4.Kd3)
4. Kd3 ! Bb2
5. Ke4 ! And the white pawn cannot be stopped.

Test your Chess Knowledge

1. 15 years old
2. Humpy Koneru from India
3. Garry Kasparov
4. 1885
5. Arianne Caoili
6. 16th century (i.e. 1500s)

For all your chess requirements contact Chess Ideas.

Vinyl boards 45cm x 45cm .Choice of blue, burgundy, green, black or brown.

\$6.95



Standard tournament plastic chess set . Matt or Glossy CIACP03a – plastic felt base.

\$17.75



The CGL tournament standard is the star of chess clocks. Light durable plastic housing. Is impact resistant for safe travelling.

\$45.00



Zip up nylon carrying case 56cm x 17cm. Holds a tournament chess set, roll up vinyl board and chess clock, plus pockets for pens and score sheets.

\$16.95



All the above as a package.

\$85.95

*To purchase any of the above items phone 9532-8370 or e-mail
admin@chessideas.com.au*